



**MASS FATALITY MANAGEMENT
PLANNING
BEST PRACTICES**

Presented by

Arbie Goings

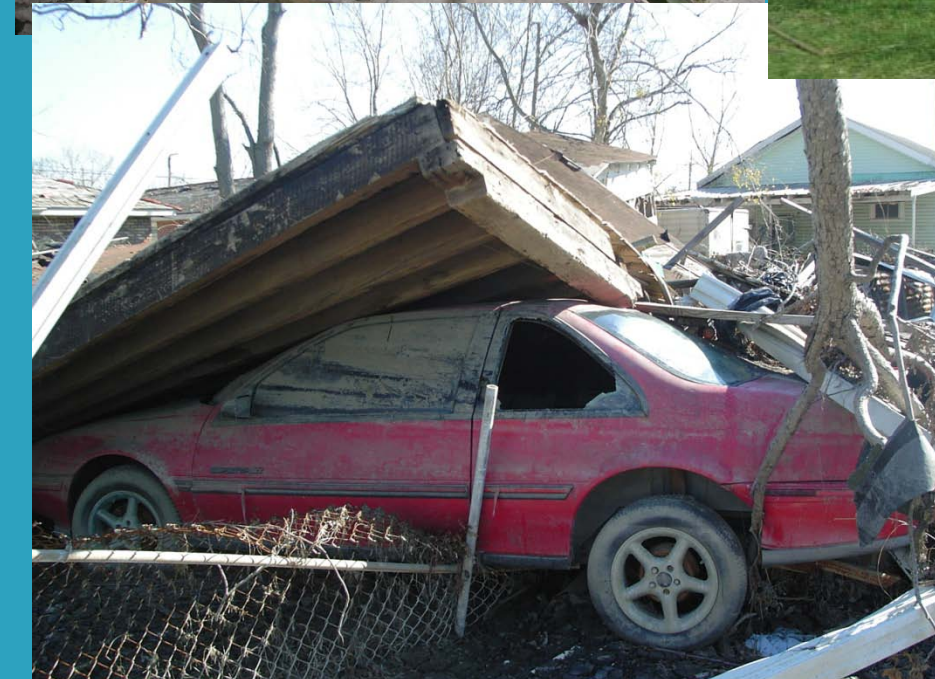
Director, Mass Fatality Planning and Response
Service

SNA International

SNA INTERNATIONAL

- Washington DC metro based company
- Founded in October 2002 as Sozer, Niezgoda and Associates
- Formalized Mass Fatality Perpetration and Response Component in 2008
- Changed name to SNA International in 2009
- Team of Subject Matter Experts with “end to end” experience

SNA INTERNATIONAL



SNA INTERNATIONAL



Don't Wait !

Plan NOW!!!

Considerations:

- Who?
- What?
- When?
- Where?

SNA INTERNATIONAL

Who?

Who are the stakeholders in your community that would participate in a mass fatality response?



MEDICAL EXAMINER INFO



SNA INTERNATIONAL

Who?

- Identify stakeholders
- Plan and train together



SNA INTERNATIONAL

What?

- Need to be accomplished
- Resources required to get job done



When?

- Inform public-Manage expectations
- Access needs
- Request assistance
- Deploy resources
- Transition back to local resources

Where?

- Temporary morgue
- Family Assistance Center
- Housing-Responders and families
- Volunteer and donations staging
- City/County offices if displaced
- Other incident/area specific

Planning-How to begin

- Lessons learned and best practices
- Mass Fatality planning companies
- Engage stakeholders
- Locate/Designate funding
- Begin small if necessary
- **GET STARTED NOW!!!!**

Why is this important?



Questions?

SNA  INTERNATIONAL

Thank You

Arbie Goings

Director, Mass Fatality Planning and Response
Service

Office: 703-370-1930

Cell: 225-963-9225

agoings@snadna.com